



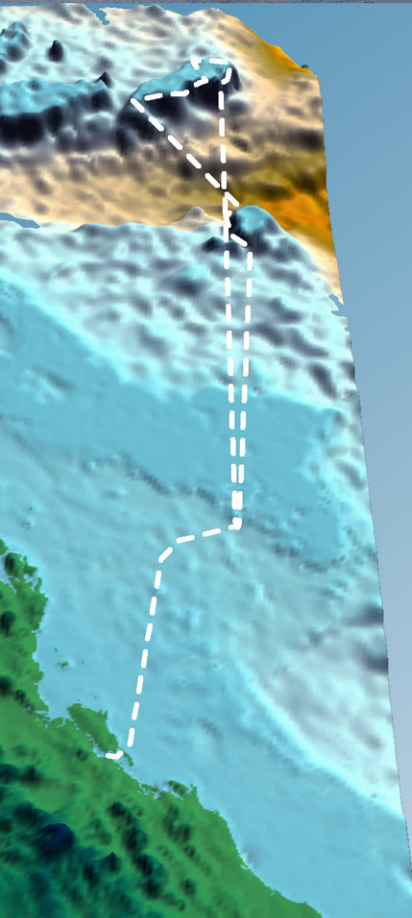
Coral Sea



Expedition

30 Nov - 10 Dec 2009





The Expedition

Lihou Reef is a very remote and poorly known National Nature Reserve, three times the size of the Australian Capital Territory. This expedition is the first to assess the biodiversity of the northernmost islands, some 280 miles off the Australian coast, and the first to visit Lihou Reef with this purpose since 1984.

One of the objectives is to refind and discover more about the rare and threatened *New Caledonian Fairy Tern*, which was found breeding on nearby islands by this expedition in December 2006. Within its previously known range "drastic conservation measures" are needed, so it may be one of the most important breeding birds in the whole Coral Sea. We will also be documenting pelagic seabirds, whales and dolphins, adding to a database of knowledge about this little known part of the world.

MV Eastern Voyager

Our vessel for the trip is the brand new Eastern Voyager, a fully air-conditioned 26m ocean-going vessel run by Tura Charters.

Activities

It takes about two days to reach Lihou Reef, giving us opportunity to take in Marion Reef enroute and an island in the Great Barrier Reef for a resort visit on return. For the most part, we will be staying the night at islands of Lihou Reef and cruising between islands during the day, with plenty of time for snorkelling, diving and island visits each morning and afternoon.

TRIP ITINERARY (note, may change, indicative only)

- 30 Nov: Depart Gladstone at night.
- 1 Dec: Cruise through whole of Great Barrier Reef.
- 2 Dec: Pass by Marion Reef at dawn. Possibly stop at reef for half a day.
- 3 Dec: Arrive Georgina Cay (Lihou Reef) at dawn. Spend morning on Cay, then depart for Edna Cay, arriving mid-afternoon. Possible tenders to Helen and Fanny Cay.
- 4 Dec: Spend morning on Edna Cay, then depart for Anne Cay, arriving mid-afternoon. Possible tender trip to Betty and Carol Cay.
- 5 Dec: Spend morning on Anne Cay, then depart for Lorna Cay, crossing centre of Lihou Reef via Herald Passage. Arrive Lorna Cay mid-afternoon. Possible tenders to Little Margaret and Margaret Cay.
- 6 Dec: Spend morning on Lorna Cay. Depart for Middle Cay, arriving mid-afternoon. Visit Middle Cay afternoon.
- 7 Dec: Spend day visiting Turtle Islet and Observatory Cay.
- 8 Dec: Depart Lihou Reef first light, cruising outer reef shelf waters all the way around to Herald Passage, then head south. Nightfall about 70 miles south of the reef.
- 9 Dec: Dawn about 30 miles north of Great Barrier Reef. Spend day passing through reef. Visit resort island for drinks in the evening.
- 10 Dec: Daylight cruise back to Gladstone for an early evening return.

For more details about the trip, contact Simon Mustoe, 39 The Crescent, Belgrave Heights, Victoria 3160 AUSTRALIA. +61 (0)3 9752 6398 / +61 (0)405 220830. Email simonmustoe@ecology-solutions.com.au





Terms and Conditions

Price: \$3,700.00. This is based on a minimum of 16 people and shared cabins. Does not include alcoholic beverages. Does not include flights to and from Gladstone. You are required to *promptly* make your own way to and from the vessel.

Timing: departs Gladstone Harbour no later than 18:00 on 30 November. Returns 18:00 on 10 December 2009.

Insurance: It is strongly recommended that you take out your own personal travel insurance, to cover you for any unforeseen last-minute cancellation (including flights). Your insurance should have adequate provision for emergency evacuation.

Changes to itinerary: Tura Charters is not responsible for any delays or changes to the published itinerary, particularly as a result of inclement weather. Tura Charters reserves the right to modify the trip route at any time.

Payment: A cheque or money order deposit of \$550 made out to Tura Charters will become non-refundable on the 31 May 2009. Payment of the balance of \$3150 will be required on or before the 30 September 2009. Please send all cheques to Simon Mustoe at the address below.

Diving and Fishing: both available, though equipment will either need to be brought or hired. Proof of PADI certificate and a logbook will be required. All diving will be at the discretion of the vessel Captain and the DiveMaster, under strict Queensland regulations. Please enquire about hire costs at the address below.

Please complete the following booking form and send it to the address below.

CORAL SEA EXPEDITION 2009 - Booking Form

Name

Address

Tel Mobile Email

Emergency contact (e.g. next of kin)

Address (or "as above")

Tel Mobile Email

Will you need to hire Dive equipment Y / N Fishing equipment Y / N

Special requirements (e.g. diet)

I have read and understood the terms and conditions (tick)

Signed

Date

Coral Sea Expedition 2009. Simon Mustoe, 39 The Crescent, Belgrave Heights, Victoria 3160 AUSTRALIA. +61 (0)3 9752 6398 / +61 (0)405 220830. Email simonmustoe@ecology-solutions.com.au

